

SALFORD WALKING FESTIVAL

Salford Ranger Team 2025



exciting
walks
for all
abilities



Over **40** autumn walks in Salford

Salford City Council



WELCOME TO OUR SALFORD WALKING FESTIVAL



TINY TOTS RAMBLE

Every Friday throughout the year. Meet at 10.15am, Walk 10.30am to 11.30am
Clifton Country Park,
Clifton House Road, M27 6NG



A gentle wander around Clifton Country Park, for parents or carers with their young children. Suitable for buggies / pushchairs. We might be playing poo sticks on the river, splashing in puddles, or feeding the ducks on the lake. Wrap up well and join our friendly group!

Packed full of exciting walks for everyone.

This leaflet highlights the various walks that will be taking place around in Salford. There are long, short and differently themed walks to suit all abilities.

Scan the QR code below for our Eventbrite pages for most walks or email rangers@salford.gov.uk

eventbrite.co.uk/o/salford-ranger-team-16476416181



All information correct at time of going to press.

IRWELL VALLEY WALKS

Irwell Valley Walks start and end at Clifton Country Park, they are usually around 2 hours, but may sometimes be longer or shorter. Bring water, suitable walking clothing and footwear.

email: rangers@salford.gov.uk

Clifton Country Park,
Clifton House Road, M27 6NG



MODERATE
TO HARD
WALKS



TUESDAY 23 SEPTEMBER

10am to 12.00pm

To Phillips Park via Mere Clough.

TUESDAY 30 SEPTEMBER

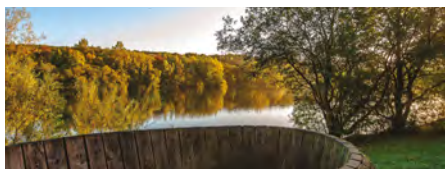
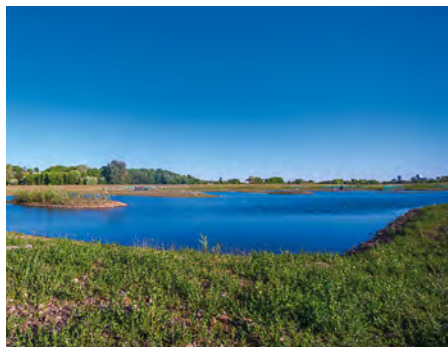
10am to 1pm

Moses Gate Country Park.
Bring snack and drink.

TUESDAY 7 OCTOBER

10am to 12.00pm

Livia and Silverdale, to admire the sweeping views over Manchester.



TUESDAY 21 OCTOBER

10am to 1pm

Up to Hurst Wood hill top.
Bring drink and snack.



TUESDAY 28 OCTOBER

10am to 12.00pm

Ringley and Prestolee,
back along the canal.



RANGER/ GENERAL WALKS



INTRODUCTION TO NAVIGATION

Saturday 13 September,
Introduction to Navigation
Tickets Eventbrite

Saturday 18 October,
[eventbrite.co.uk](https://www.eventbrite.co.uk)

10am to 2pm
Clifton Country Park,
Clifton House Road,
M27 6NG



Would you like to learn to use a map?
This four hour session will introduce
basic map reading and compass
skills and help you build confidence
navigating in the countryside. Bring
lunch, a drink and good walking
shoes. Booking essential.



THE LINNYSHAW LOOPLINE

Thursday 18 September,
10am to 2.00pm
Blackleach Country Park,
John St, Walkden M28 3TD



Bring lunch and drink.
Booking essential.
[eventbrite.co.uk](https://www.eventbrite.co.uk)





AUTUMN COLOURS

**Saturday 27 September,
10am to 12.00pm**

Blackleach Country Park,
John St, Walkden M28 3TD



Family friendly guided walk exploring the woods at Blackleach Country Park.

eventbrite.co.uk



WETLANDS WALK

**Sunday 5 October,
10.30am to 12.30pm**

End of South Radford Street
by Lamorna Close



A moderate stroll through Kersal Dale to Kersal Wetlands. Booking not require.

KersalWalk.eventbrite.co.uk

PEEL TO KERSAL MOOR

**Thursday 9 October,
10am to 1pm**

Peel Park Ranger Base
(Inside the park at the side of
Maxwell Building), M5 4WT



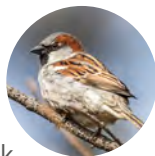
A moderate walk from Peel Park to Kersal Moor spotting wildlife along the way.

www.eventbrite.co.uk

SUNRISE WALK

**Saturday 11 October,
7.30am to 9am**

Blackleach Country Park,
John St, Walkden M28 3TD



A peaceful walk around Blackleach country park, listening to the dawn chorus. Bring warm clothes and a snack. Hot drink provided. Booking required.

www.eventbrite.co.uk





BRIDGEWATER CANAL WALK

**Sunday 12 October,
10.30am to 12.30pm**

Worsley Courthouse Car
Park, M28 2PD



Gentle walk along the Bridgewater Canal towards Boothstown and back. Meet by Worsley Courthouse Car Park. Booking not required.



WHEELCHAIR/ACCESSIBLE WALK

**Wednesday 15 October,
11am to 1pm**

Blackleach Country Park,
John St, Walkden M28 3TD



A gentle walk, open to all but will follow a wheelchair accessible route. Blackleach/Loopline. Meet at Blackleach visitors centre.

www.eventbrite.co.uk



FOLKLORE OF TREES TRAIL

**Tuesday 21 October,
1pm to 3pm**

Peel Park/Crescent
Meadows, M5 4WU



Gentle walk. Booking not required.



WELLBEING WALKS



Salford Community Leisure Wellbeing Walks

aim to help people get active locally, are easy walks led by trained volunteer walk leaders. Please arrive 15 minutes before the start of the walk.

Wear flat grippy shoes or trainers, suitable clothing for the weather. Bring some water. No booking required. For further information contact Jo.bennett@scll.co.uk

MOST THURSDAYS
IN SEPTEMBER
AND OCTOBER

RHS GARDEN BRIDGEWATER WELLBEING WALK

Thursday 11 September,
10.30am to 11.00am

Meet at 10.15am, outside the Welcome Building, RHS Garden Bridgewater, M28 2LJ



A Slower paced, easy walk.

MONTON WELLBEING WALK OF HOPE, SUICIDE PREVENTION

Thursday 25 September,
10am to 11am

Meet at 9.45am. Monton Green M30 8AP (near the bench on the green).



WORSLEY WELLBEING WALK

Thursday 9 October,
10am to 10.30am

Meet at 9.45am. Worsley Leisure Centre, Reception, M28 3AB



A gentle paced half hour walk.



RHS GARDEN BRIDGEWATER WELLBEING WALK - STRENGTH AND BALANCE AWARENESS

Monday 13 October,
1.30pm to 2.30pm

Meet at 1.15pm, outside the Welcome Building, RHS Garden Bridgewater, M28 2LJ



A 30min walk and 30min exercises/guidance.



PEEL PARK WELLBEING WALK

Thursday 23 October,
10am to 11am

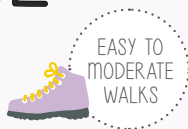
Meet at 9.45am. Salford Museum and Art Gallery, M5 4WU



Explore the Art Gallery/ Museum post walk.



HERITAGE WALKS



FOOTSTEPS OF JAMES BRINDLEY

**Tuesday 16 September,
10.30am to 12.30pm**

Clifton Country Park, Clifton
House Road, M27 6NG



A walk around Clifton Country Park, looking at the heritage which was influenced by this great engineer.

jamesbrindleyswf.eventbrite.co.uk

SWINTON HERITAGE TRAIL

**Friday 19 September,
2pm to 3.30pm**

Swinton Gateway, Crompton
House, 100 Chorley Rd, Swinton,
Manchester M27 6BP



A guided walk with local historian Paul Sherlock, discovering the past lives of Swinton.

swintontrailswf.eventbrite.co.uk



BRIDGEWATER WOMEN

**Friday 10 October,
10.30am to 12.30pm**

Beesley Green Community Centre,
Greenleach Lane, M28 2QW



Through Roe Green, Worsley Woods, Worsley Delph and the Bridgewater Canal, learning about the part women played in the history of the area.

One way – buses available back to the start.

bridgewaterwomenswf.eventbrite.co.uk





SALFORD QUAYS HERITAGE TRAIL

**Saturday 11 October,
10.30am to 12.30pm**

Ordsall Park Bowling Pavilion,
Hulton St, M5 3NZ



Join us as we walk around
Salford Quays, learning about
its great history and connection
with Manchester Ship Canal.
salfquaysswf.eventbrite.co.uk

CUTTING THE ANACONDA

**Wednesday 22 October
10.30am to 12.30pm**

Greengate Square, M3 5AS



A one way, leisurely guided walk to
Peel Park along the banks of the
River Irwell, with the history of the
disappearing snake thrown in.
Buses available back to the start.
anacondaswf.eventbrite.co.uk

MINDFUL WALKS



MINDFUL NATURE CONNECTION



**Wednesday 24 September,
12.00pm to 1pm**

MNC2409.eventbrite.co.uk

**Monday 20 October,
12.00pm to 1pm**

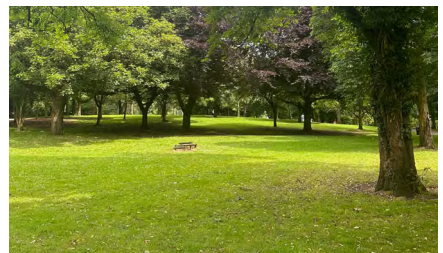
MNC2010.eventbrite.co.uk



Peel Park/Crescent
Meadows, M5 4WU



A gentle walk with pauses to
take part in mindful activities
and connect with nature.



BAT WALKS



BLACKLEACH BAT WALK

**Wednesday 3 September,
7.45pm to 9pm**

[BlackleachBatWalk1.eventbrite.co.uk](https://www.eventbrite.co.uk/BlackleachBatWalk1)

**Tuesday 16 September,
7pm to 8.15pm**

[BlackleachBatWalk2.eventbrite.co.uk](https://www.eventbrite.co.uk/BlackleachBatWalk2)

**Monday 6 October,
6.30pm to 7.45pm**

[BlackleachBatWalk3.eventbrite.co.uk](https://www.eventbrite.co.uk/BlackleachBatWalk3)

Blackleach Country Park,
John St, Walkden, M28 3TD



Gentle walks looking out for bats.
Meet by the Visitors Centre.

VARIOUS
LOCATIONS
IN SALFORD



Learn some fun bat facts and use a Join the Ranger looking for these creatures of the night. Wrap up well and bring a torch. Subject to weather. £2 adults, free 16's and under.

WORSLEY WOODS BAT WALKS

**Saturday 11 October,
7pm to 8.30pm**

[WorsleyWoodsBatWalk1.
eventbrite.co.uk](https://www.eventbrite.co.uk/WorsleyWoodsBatWalk1)

**Thursday 30 October,
7.30pm to 9pm**

[WorsleyWoodsNightWalk.
eventbrite.co.uk](https://www.eventbrite.co.uk/WorsleyWoodsNightWalk)

Beesley Green Community Centre,
Greenleach Lane, Worsley M28 2QW



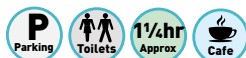
Stroll through the woods
in the dark. Bring a torch.
Moderate ability walks
looking out for bats.
Meet by Beesley Green
Community Centre.

CLIFTON BAT WALK

**Friday 19 September,
7pm to 8.15pm**

[CliftonBatWalk1.eventbrite.co.uk](https://www.eventbrite.co.uk/CliftonBatWalk1)

Clifton Country Park
Clifton House Road, M27 6NG



Meet by the Visitors Centre.

WILDLIFE WALKS

Various fungi walks with expert Dave Winnard



EASY
ABILITY
FUNGAL
FORAYS

FORAGING WALK-PEEL PARK

**Saturday 6 September,
10am to 12.00pm**

Peel Park, The Crescent,
Salford M5 4WU



Explore the park and learn about the edible plants around us. Booking essential. Meet at Peel Park Base.
[autumnforaging0609.eventbrite.co.uk](https://www.eventbrite.co.uk/autumnforaging0609)

FUNGI WALK-KERSAL

**Tuesday 23 September,
10.30am to 12.30pm**

[fungiwalk2309.eventbrite.co.uk](https://www.eventbrite.co.uk/fungiwalk2309)

**Tuesday 28 October,
10.30am to 12.30pm**

[fungiwalk2810.eventbrite.co.uk](https://www.eventbrite.co.uk/fungiwalk2810)

Kersal Moor / Kersal Dale. Meet at Moor Lane Entrance, parking available on Moor Lane



Explore the woods and learn about mushrooms and fungi. Booking essential.



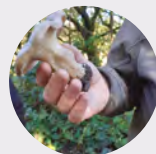
FUNGI WALKS-WORSLEY

**Sunday 28 September
1.30pm to 3.30pm**

Worsley Woods, Beesley
Green entrance



Explore the woods and learn about mushrooms and fungi. Booking essential.
[FungiWW.eventbrite.co.uk](https://www.eventbrite.co.uk/FungiWW)



FUNGI WALK-CLIFTON

Wednesday 29 October,

10am to 12.00pm

[ccpfungiam.eventbrite.co.uk](https://www.eventbrite.co.uk/ccpfungiam)

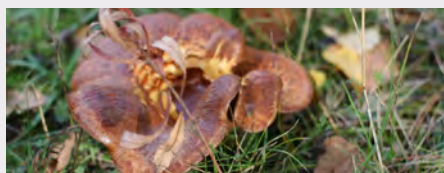
1pm to 3pm

[ccpfungipm.eventbrite.co.uk](https://www.eventbrite.co.uk/ccpfungipm)

Clifton Country Park
Clifton House Road, M27 6NG



Finding out about the wonderful world of mycorrhiza and fruiting bodies, all around us in the woods. Booking essential.



HALLOWEEN TRAILS

GREAT FOR KIDS



PEEL PARK HALLOWEEN TRAIL

Monday 27 October
10am to 3pm

Peel Park, M5 4WU



A Halloween trail around the park for the children
Meet at Peel Park Base.
Booking not required.

EASY ABILITY
HALLOWEEN
WALKS

DUKES DRIVE HALLOWEEN TRAIL

Wednesday 29 October,
1pm to 3pm

Dukes Drive Car Park,
Parrin Lane, M30 8AP



A Halloween trail around the park
for children. Booking not required.

CLIFTON HALLOWEEN RAMBLE

Friday 31 October,
10.30am to 12.30pm

Clifton Country Park
Clifton House Road, M27 6NG



A Halloween trail around the park
for children. Booking not required.



For further information
Contact Salford Ranger Team.
Email rangers@salford.gov.uk
Clifton Country Park Visitor Centre,
Clifton House Road, Swinton, M27 6NG